

Instructions for upgrading Firmware for Indigo NXT Ice Machines

Step 1: You must use a formatted 32 GB or smaller Flash Drive with an allocation unit size of 8192 bytes or less. This procedure can be downloaded from the Manitowoc Ice website www.manitowocice.com

Caution: Not following this procedure may impede the upgrade process.

Note: The following instruction for Upgrading Firmware applies to upgrades for the Indigo NXT ice machine control boards and display interface.



At a Windows Based Computer (PC)

Step 2: Download Firmware from website, <https://www.manitowocice.com/Service/Indigo-Firmware-Updates> to your computer.

Step 3: Insert 32 GB or less Flash drive into computer.

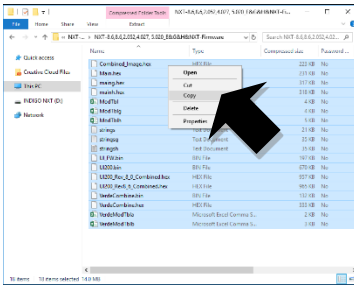


Inserting Flash Drive into Computer

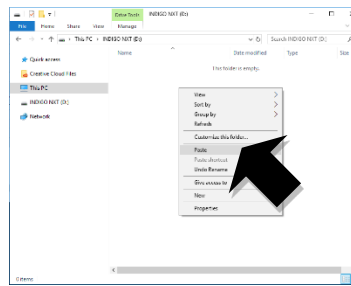
Step 4: Open Firmware Zip and then open the folder.

Do not change or rename the files as that will impede the upgrade process.

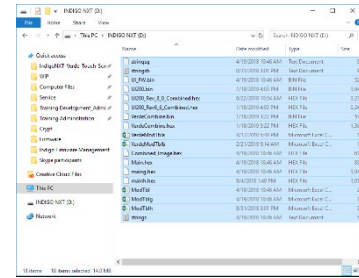
1. Copy the **eighteen (18)** files and paste them onto your properly sized and formatted flash drive.



Copy all 18 files from your Computer



Paste all 18 files on to your Flash Drive



Confirm that all 18 files are on the Flash Drive

Step 6: Remove Flash drive from computer (*suggestion: mark flash drive with the firmware revision to identify at a later date.*)

To Upgrade Firmware on the Indigo NXT Ice machine

1. Insure ice machine is off and Press Menu Button.



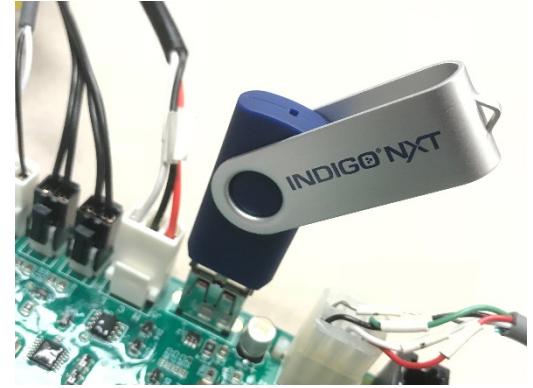
2. Press Service.



3. Press USB.



4. Insert Flash Drive with loaded firmware into the USB port on the Control Board.



5. Press "UPGRADE FIRMWARE".



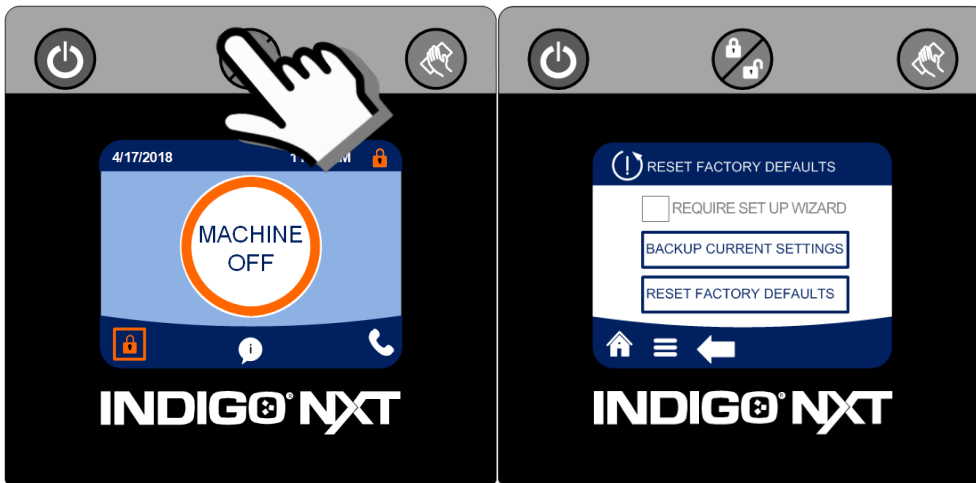
6. Wait for completion. *This may take up to 10-15 minutes.*



****Caution, NOT following the instructions may impede upgrade process**. While upgrading firmware:**

- **Do Not Disconnect power**
- **Do Not Remove Flash Drive**
- **Do Not press any of the interface buttons**

Once complete, the display goes back to the home screen and may be locked. Press the Lock/Unlock button if the screen is locked.



7. Reset defaults to Factory Specification.
8. Remove flash drive and check Firmware Revision under Machine information for proper loading.



9. Cycle Power (*disconnect power and reapply power*) to the ice machine.
10. Check for Proper Ice Machine Operation.